

# SETUP SHEET

DATE 10.06.2000

TRACK Vaasa asphalt (tight)

NAME kentech

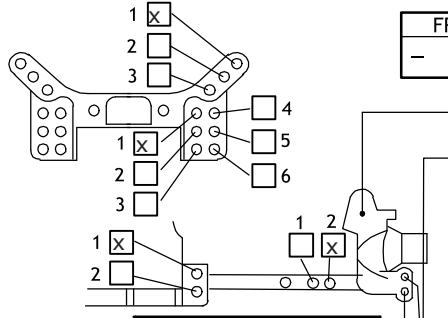
## FRONT

LENGTH	61.0mm
OUTER SPACER	
PISTON	#3
INNER SPACER	
SPRING	Green
OIL	Losi 60wt

SHOCK END		
LONG	X	SHORT

SHOCK		
PLASTIC	X	ALUM

FRONT ROLL BAR	
YES	



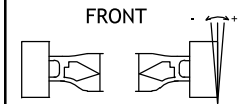
FRONT CAMBER		
-	1	+

CASTER BLOCK		
STANDARD 5 DEG		X
TEAM SUZUKI 3 DEG		
TEAM SUZUKI 5 DEG		
TEAM SUZUKI 7 DEG		

TIRE	138G
------	------

INNER FOAM	037F
------------	------

TOE		
-	0	+



RIDE HEIGHT	
5.2	mm

PART DESCRIPTION	STANDARD	GRAPHITE
BULKHEAD	X	
SHOCK TOWER	X	
LOWER ARMS		X
CASTER BLOCKS	X	
STEERING BLOCKS	X	

## REAR

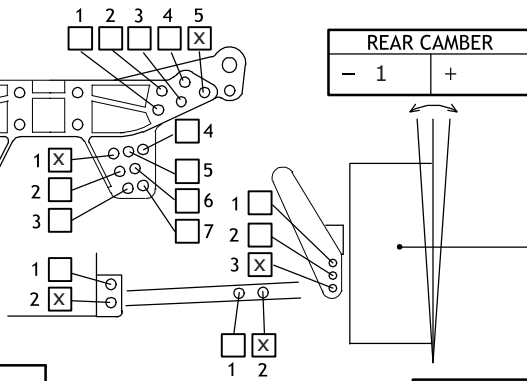
LENGTH	61.0mm
OUTER SPACER	
PISTON	#3
INNER SPACER	
SPRING	Orange
OIL	Losi 60wt

SHOCK END		
LONG	X	SHORT

SHOCK		
PLASTIC	X	ALUM

REAR ROLL BAR	
YES	

TOE-IN BLOCKS		
0	⊕	2



REAR CAMBER		
-	1	+

PART DESCRIPTION	STANDARD	GRAPHITE
BULKHEAD	X	
SHOCK TOWER	X	
LOWER ARMS		X

TIRE	138G
------	------

INNER FOAM	037F
------------	------

RIDE HEIGHT	
5.5	mm

CHASSIS		
	STANDARD CHASSIS (TC)	
X	GRAPHITE SLOTTED CHASSIS (TC PRO)	
	STANDARD SLOTTED CHASSIS (TC R)	

BODY	
Andy's Stratus	
WING	
standard raised 2mm	
FRONT DRIVE	
X	DIFF
	ONE-WAY
CENTER DRIVE	
X	DIRECT
	ONE-WAY
SPEED CONTROL	

CENTER BRACE	
	STANDARD
	GRAPHITE
X	SINGLE PIECE UPPER DECK
MOTOR	
TURN	WIND
9	2
GEAR RATIO	
PINION	SPUR
21	T 78 T
BATTERIES	
LRP Panasonic 3000	
TRACTION ADDITIVE	

COMMENTS:

- Touring Summer II national series race
- tight, medium grip asphalt track
- 20-22 deg C
- qualified 3rd, finished 9th after 2 DNF's
- result 21/5.00
- best lap 13.83